

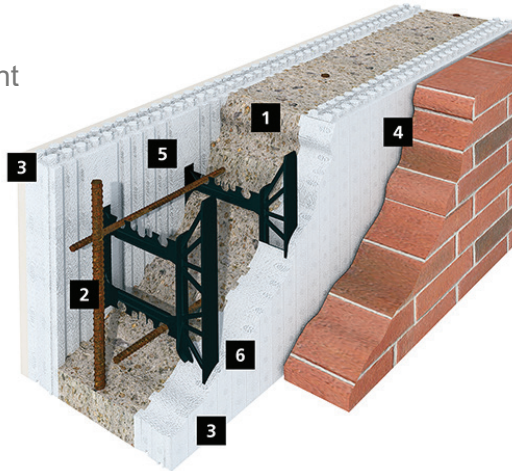
With Insulated Concrete Forms (ICF), you can grow your business, increase profits and set yourself apart from your competition.

ICF is quickly growing in the custom residential market and wide range of commercial markets such as mid-rise residential, schools, assisted living, military and agricultural.

## GENERATE ADDITIONAL REVENUES & INCREASE PROFITS

### 6 Construction Steps in 1 Simple Package.

1. Concrete
2. Steel Reinforcement
3. Insulation
4. Air Barrier
5. Vapor Barrier
6. Furring Strips



**Build faster** - 6 steps in 1 means you'll finish projects faster and be on to the next one sooner.

**Build easier and lighter** - A mason typically lifts 1.8 million lbs. per year. Using Logix ICF can lighten that load by about 1.5 million lbs.

**Build your own basements out** - Keep your own people busy with the entire project so that margins stay in your pocket.

**Build through cold and wet conditions** without serious interruption.



## ICF IS EASY TO GET INTO

The upfront investment required to begin working with ICF is surprisingly low. In fact, only basic handset tools are needed. The most significant investment to consider is ICF bracing. This is a must-have on a jobsite, but even then, most installers initially rent ICF bracing.

Once you begin to build consistently with ICF, you'll likely decide to buy your own bracing. A set of 48 braces will likely cost about \$10,000 to \$12,000 depending on the brand.

## ...AND THE LEARNING CURVE IS SHORT

You can minimize your ICF learning curve by following these three simple steps:

1. Attend a local ICF Installer Training Course
2. Use our many ICF solutions and aids to help you estimate and engineer your ICF projects
3. For your first ICF project, arrange for some on-site technical support. Ongoing support is also available for subsequent projects.